

Dedicated to Vera Nettlefold
with affection
Albert Coates

Elaine's Song of
Love + Death

London Dec. 12th 1933



Tennyson's

Elaine's Song of Love + Death

A.C. 1933

Sweet is true Love tho' given in vain in vain, and sweet is Death who

puts an end to pain I know not which is sweeter no not I

do not I Love art than Sweet then



bitter Death must be Love, Thou art bitter Sweet is Death to me

Handwritten musical score for the first system. It consists of three staves: a vocal line in treble clef, a piano accompaniment in treble clef, and a bass line in bass clef. The key signature has two flats (B-flat and E-flat). The lyrics are written below the vocal line. The first measure contains the lyrics 'bitter Death must be'. The second measure contains 'Love, Thou art bitter'. The third measure contains 'Sweet is Death to me'. The piano accompaniment features a steady eighth-note pattern in the right hand and a similar pattern in the left hand. The bass line consists of a few notes, including a double bass line in the second measure.

mf Oh Love if death be swee — ter let me

Handwritten musical score for the second system. It consists of three staves: a vocal line in treble clef, a piano accompaniment in treble clef, and a bass line in bass clef. The key signature has two flats. The lyrics are written below the vocal line. The first measure contains the lyrics 'Oh Love'. The second measure contains 'if death be'. The third measure contains 'swee — ter let me'. The piano accompaniment continues with a steady eighth-note pattern. The bass line includes a 'dim' marking and a '+' sign.

die Sweet Love that seems not made to

Handwritten musical score for the third system. It consists of three staves: a vocal line in treble clef, a piano accompaniment in treble clef, and a bass line in bass clef. The key signature has two flats. The lyrics are written below the vocal line. The first measure contains the lyrics 'die'. The second measure contains 'Sweet'. The third measure contains 'Love that seems not made to'. The piano accompaniment features a steady eighth-note pattern. The bass line includes a 'dim' marking and a '+' sign. There are some scribbles and a large 'X' over the right side of the system.

3

Sweet Love that seems not made to fade away away

Handwritten musical score for the first system. It features a vocal line on a single staff and piano accompaniment on two staves. The piano part includes a left hand with chords and a right hand with arpeggiated figures. The lyrics are written above the vocal line.

Sweet Death that makes us loveless clay I know not which is sweeter

Handwritten musical score for the second system. It features a vocal line on a single staff and piano accompaniment on two staves. The piano part includes a left hand with chords and a right hand with arpeggiated figures. The lyrics are written above the vocal line.

no not I

no not I

Handwritten musical score for the third system. It features a vocal line on a single staff and piano accompaniment on two staves. The piano part includes a left hand with chords and a right hand with arpeggiated figures. The lyrics are written above the vocal line.

fade away away

Sweet Death that

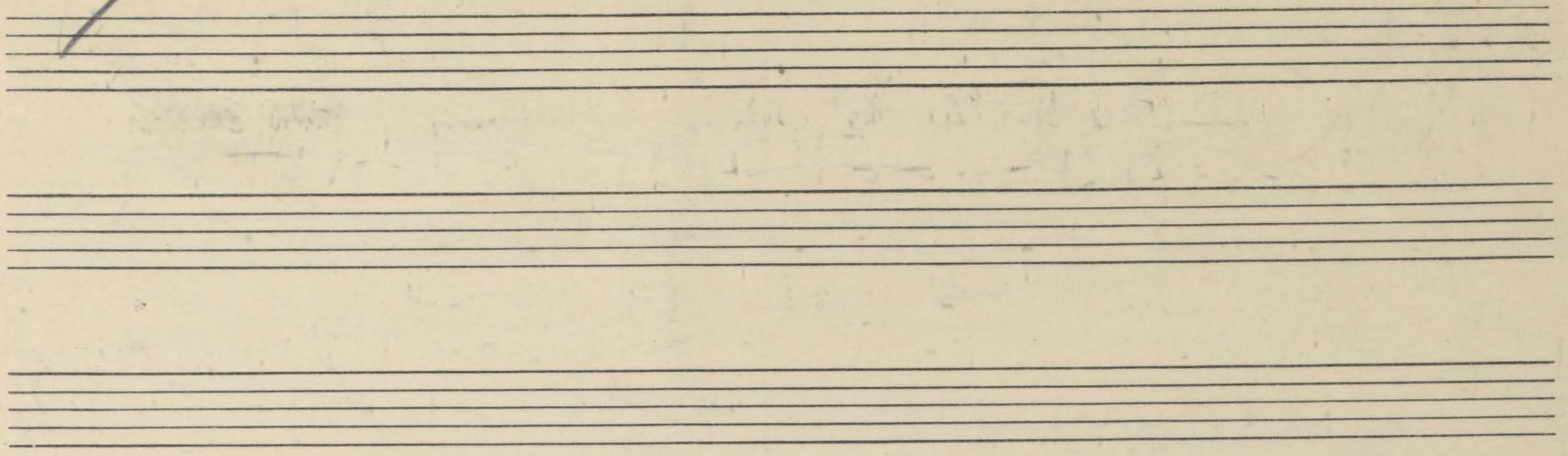
manes is loveless day

Know not which is sweeter

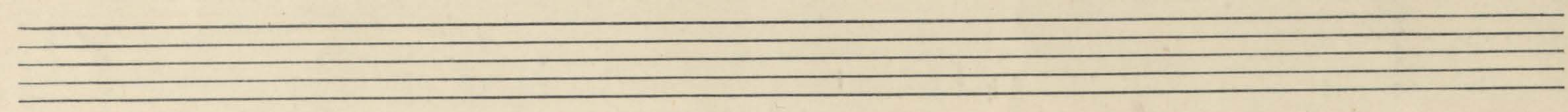


4

4



Handwritten musical score for voice and piano. The score is divided into two measures by a vertical line. The first measure contains the lyrics "No - not -" and the second measure contains "No - not -". The music is written in a key signature of two flats (B-flat and E-flat) and a 2/4 time signature. The piano accompaniment includes chords and melodic lines. A large 'X' is drawn over the entire score, indicating it is crossed out.



Handwritten musical score for piano. The score is divided into two measures by a vertical line. The first measure contains a melodic line with a slur and a plus sign (+). The second measure is mostly empty, with some notes and a plus sign (+). The music is written in a key signature of two flats (B-flat and E-flat) and a 2/4 time signature. A large 'X' is drawn over the entire score, indicating it is crossed out.

I fain would follow Love if that could be could be

I needs must follow death who calls for me

call & I follow I fol — low Let me

[Handwritten scribbles and illegible text]

Four sets of empty musical staves.

Handwritten musical notation on three staves, heavily crossed out with large diagonal lines. The notation includes notes, rests, and dynamic markings such as *dim*. The key signature is bb and the time signature is 4 .

Handwritten musical notation on three staves, also heavily crossed out with large diagonal lines. The notation includes notes, rests, and dynamic markings such as *dim*. The key signature is bb and the time signature is 4 .



6

f *dim*

die Let me

ad lib dim

die

2nd Coating
 23 March 1934
 Riga

f See wieder

7

die Let me die

p *dim*

(ad lib)

dim

12 Dec 1933
K.C.

de die der me ur

