

Sonatine

S. Grové

1946

Moderato ♩ = c. 96

Klarinet A

Klavier.

Mitvoeringsregte: SAMRO, Bus 9292, Johannesburg 2 000



Handwritten musical score for the first system. It consists of a single treble clef staff and a grand staff (treble and bass clefs). The music is in common time (C) and includes various notes, rests, and dynamic markings such as *p* and *mf*. There are several triplet markings (3) and some notes are marked with a plus sign (+). Red and blue highlights are present above the staff.

Handwritten musical score for the second system. It features a single treble clef staff and a grand staff. The music includes dynamic markings like *f* and *p*, and a section labeled 'B'. There are triplet markings and notes with plus signs. Red and blue highlights are present above the staff.

Handwritten musical score for the third system. It features a single treble clef staff and a grand staff. The music is marked *Agitato* and *f*. A tempo marking *Agitato J=c 116* is present. There are triplet markings and notes with plus signs. Red and blue highlights are present above the staff.

Handwritten musical score for the fourth system. It features a single treble clef staff and a grand staff. The music includes dynamic markings like *sub p* and *mf*, and triplet markings. There are notes with plus signs and red and blue highlights above the staff.

Handwritten musical score for the first system. It consists of a treble clef staff and a bass clef staff. The treble staff contains a melody with several triplet markings (indicated by a '3' in a bracket) and a dynamic marking of *f* (forte). The bass staff provides harmonic accompaniment with chords and some triplet figures. The system concludes with a double bar line and a 3/4 time signature.

Handwritten musical score for the second system. The treble staff begins with a dynamic marking of *p* (piano) and includes a *subp* (sub-piano) marking. The bass staff continues with accompaniment, featuring several triplet markings. The system ends with a double bar line and a 3/4 time signature.

Handwritten musical score for the third system. The treble staff has a dynamic marking of *mf* (mezzo-forte). The bass staff includes several triplet markings and chordal accompaniment. The system concludes with a double bar line and a 3/4 time signature.

Handwritten musical score for the fourth system. It begins with a tempo change instruction: *Tempo Meno mosso* with a metronome marking of $\text{♩} = c 80$. The treble staff includes a *rit* (ritardando) marking. The bass staff features triplet markings and accompaniment. The system ends with a double bar line and a 3/4 time signature.

Handwritten musical score for the first system. It consists of a vocal line and a piano accompaniment. The time signature is 3/4. The vocal line has the lyrics "d-i-m" written below it. The piano accompaniment features a melodic line in the right hand and a bass line in the left hand, with various chords and accidentals.

Handwritten musical score for the second system, starting with a section marked "C.". It includes a vocal line and piano accompaniment. The time signature is 3/4. Dynamic markings include "mp" (mezzo-piano) and "f" (forte). The piano accompaniment has a complex rhythmic pattern with many chords and accidentals.

Handwritten musical score for the third system, continuing the piano accompaniment. It includes a vocal line and piano accompaniment. The time signature is 3/4. Dynamic markings include "mf" (mezzo-forte) and "p" (piano). The piano accompaniment features intricate chordal textures and melodic lines.

Handwritten musical notation for the first system, featuring a treble and bass clef with various notes, rests, and triplets.

Handwritten musical notation for the second system, including a treble clef, notes, and triplets.

Handwritten musical notation for the third system, featuring a treble clef, notes, and triplets.

Handwritten musical notation for the fourth system, including a treble clef, notes, and triplets.

D a c c e l l

c r e s c e n d o

Tempo 1^o

a c c e l l



Meno mosso

p
mp

E Poco meno mosso p

Handwritten musical score for the first system. The top staff is a treble clef with a melodic line. The bottom two staves are a grand staff with piano accompaniment. Dynamic markings include *mp* and *p*. There are various accidentals and ornaments throughout the piece.

Handwritten musical score for the second system. The top staff is a treble clef with a melodic line. The bottom two staves are a grand staff with piano accompaniment. Dynamic markings include *mf* and *pp*. A *dim.* instruction is present. The system concludes with a double bar line and a repeat sign.

A section of the manuscript showing two empty grand staves with a double bar line and repeat sign in the center.

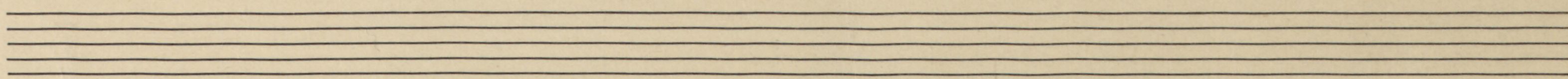
Adagio ♩ = 63

Handwritten musical score for the third system, starting with a 6/4 time signature. The top staff is a treble clef with a melodic line. The bottom two staves are a grand staff with piano accompaniment. Dynamic markings include *p*, *mf*, and *mp*.

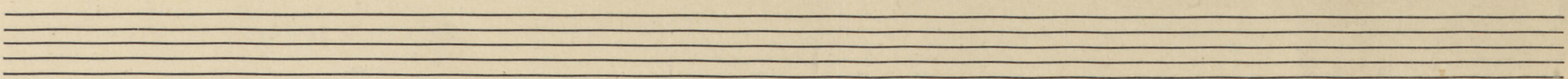
Handwritten musical score for the fourth system. The top staff is a treble clef with a melodic line. The bottom two staves are a grand staff with piano accompaniment. Dynamic markings include *pp*, *mf*, *sub p*, and *f*.



Handwritten musical score system 1. It consists of a single melodic line at the top and a grand staff (treble and bass clefs) below. The melodic line features a series of notes with dynamic markings: *pp*, *mp*, *mf*, and *pp*. There are red slurs and accents under the notes. The grand staff contains chords and accompaniment. A section of the grand staff is marked with a red 'sv' and a dotted line.



Handwritten musical score system 2. It features a single melodic line and a grand staff. The melodic line has a dynamic marking of *p* and a red slur. A section of the grand staff is marked with a red 'sv' and a dotted line. A section of the grand staff is marked with a red 'A' and a red slur. The grand staff contains chords and accompaniment.



Handwritten musical score system 3. It consists of a single melodic line and a grand staff. The melodic line has dynamic markings of *f* and *f*. The grand staff contains chords and accompaniment. A section of the grand staff is marked with a red 'sv' and a dotted line. A section of the grand staff is marked with a red 'A' and a red slur. The grand staff contains chords and accompaniment.

Handwritten musical score system 4. It consists of a single melodic line and a grand staff. The melodic line has dynamic markings of *mf* and *fp*. The grand staff contains chords and accompaniment. A section of the grand staff is marked with a red 'sv' and a dotted line. A section of the grand staff is marked with a red 'A' and a red slur. The grand staff contains chords and accompaniment.

Handwritten musical score for the first system. It consists of a treble staff and a bass staff. The treble staff begins with a melodic line marked *pp*. The bass staff provides harmonic accompaniment with chords and moving lines. There are some handwritten annotations in red ink, including a bracket under the first few notes of the treble staff.

Handwritten musical score for the second system. It features a treble staff and a bass staff. A section labeled **B.** is indicated. The treble staff has a melodic line with a *p* dynamic marking. The bass staff contains a complex accompaniment with many chords and some handwritten red markings.

Handwritten musical score for the third system. It includes a treble staff, a bass staff, and a lower bass staff. The treble staff has a melodic line with *mp* and *p* markings. The bass staff has a complex accompaniment. There are several handwritten red markings and annotations throughout the system.



Handwritten musical score for the first system. It consists of a single treble clef staff at the top and a grand staff (treble and bass clefs) below. The treble staff contains a few notes, including a triplet of eighth notes. The grand staff contains a complex piano accompaniment with many chords, some marked with '+' and 'x'. A dynamic marking 'C. p' is written above the grand staff. The system ends with a 5/4 time signature.

Handwritten musical score for the second system. It features a single treble clef staff with a melodic line containing some rhythmic markings like '3 7 3 3 7'. Below it is a grand staff with a piano accompaniment. The system concludes with a 5/4 time signature.

Handwritten musical score for the third system. The top staff has a melodic line with a large slur and a dynamic marking 'p'. The grand staff below contains a piano accompaniment with various chords and dynamics including 'p', 'mf', and 'f'. The system ends with a 6/4 time signature.

Handwritten musical score for the fourth system. The top staff is mostly empty with a few notes and a dynamic marking 'mf'. The grand staff contains a piano accompaniment with chords and dynamics like 'mp', 'p', 'mf', and 'ff'. The system ends with a 6/4 time signature.

III

Presto Vivace. ♩ = 96

Handwritten musical score for the first system, measures 1-6. It consists of a single treble clef staff and a grand staff (treble and bass clefs). The tempo is marked *mp*. Red and blue highlights are present above the staff. Measure numbers 1 through 6 are indicated at the beginning of each measure.

Handwritten musical score for the second system, measures 7-12. It consists of a single treble clef staff and a grand staff. The tempo is marked *mf*. Red and blue highlights are present above the staff. Measure numbers 7 through 12 are indicated at the beginning of each measure. A boxed measure number '12' is at the end of the system.

Handwritten musical score for the third system, measures 13-18. It consists of a single treble clef staff and a grand staff. The tempo is marked *f*. Red and blue highlights are present above the staff. Measure numbers 13 through 18 are indicated at the beginning of each measure. A boxed measure number '18' is at the end of the system.

Handwritten musical score for the fourth system, measures 19-24. It consists of a single treble clef staff and a grand staff. The tempo is marked *f*. Red and blue highlights are present above the staff. Measure numbers 19 through 24 are indicated at the beginning of each measure. A boxed measure number '21' is at the end of the system.



Handwritten musical score system 1. It consists of three staves. The top staff has a dynamic marking *p* and the word *cresc* written above it. The middle and bottom staves contain complex chordal and melodic lines. There are some red markings at the beginning of the system.

Handwritten musical score system 2. It consists of three staves. A box containing the number "30" is present in the middle staff. The system includes various musical notations such as notes, rests, and dynamic markings like *p*.

Handwritten musical score system 3. It consists of three staves. The system features a change in time signature to 3/4, indicated by a vertical line and the numbers 3 and 4. There are several red markings and dynamic markings like *f* throughout the system.

Handwritten musical score system 4. It consists of three staves. The system includes dynamic markings such as *f*, *mp*, and *mf*. There are also some red markings and complex chordal structures in the bottom staff.

Meno Mosso -

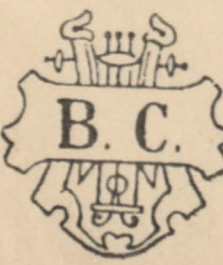
40

Handwritten musical score for the first system. It consists of three staves: a single treble clef staff at the top and a grand staff (treble and bass clefs) below. The time signature is 6/8. The key signature has one sharp (F#). The music features a melodic line in the treble staff with various dynamics including *p* and *mf*. The grand staff provides harmonic accompaniment with chords and arpeggios. There are red and blue annotations, including slurs and markings, over the score.

Handwritten musical score for the second system, continuing from the first. It follows the same three-staff format. The tempo is marked *Meno Mosso*. Dynamics range from *p* to *f*. The notation includes triplets and various chordal textures. Red and blue annotations are present throughout the system.

Handwritten musical score for the third system. The tempo is marked *a tempo*. The dynamics include *mf*, *p*, and *f*. The melodic line in the treble staff shows a triplet. The grand staff accompaniment features complex chordal patterns. Red and blue annotations are visible.

Handwritten musical score for the fourth system. The tempo is marked *a tempo*. The dynamics include *p* and *f*. The notation includes a triplet and various chordal textures. Red and blue annotations are present throughout the system.



Tempo I

Handwritten musical score for the first system. It consists of a single treble clef staff and a grand staff (treble and bass clefs). The music features a melodic line in the treble clef with notes marked with a 'p' (piano) dynamic. The grand staff provides harmonic accompaniment. Red curved lines are drawn under the first few notes of the treble clef staff. There are white scribbles above the staff.

Handwritten musical score for the second system, continuing from the first. It includes a treble clef staff and a grand staff. The treble clef staff has a melodic line with notes marked with a 'p' dynamic. Red curved lines are present under the notes. White scribbles are visible above the staff.

Handwritten musical score for the third system. It features a treble clef staff and a grand staff. A measure in the treble clef staff is marked with a circled number '69'. The music includes a 'f' (forte) dynamic marking. Red curved lines are drawn under the notes. White scribbles are present above the staff.

Handwritten musical score for the fourth system. It includes a treble clef staff and a grand staff. The treble clef staff has a melodic line with notes marked with a 'p' dynamic. The word 'c-r-e-s-c.' is written above the staff. A 'f' (forte) dynamic marking is present. Red curved lines are drawn under the notes. White scribbles are visible above the staff.

Prestissimo

Handwritten musical score for the first system. It consists of two staves: a treble clef staff and a bass clef staff. The treble staff contains several measures of music with notes, rests, and dynamic markings such as *p* and *ff*. There are also some handwritten annotations like '2' and 'p'. The bass staff contains corresponding notes and rests.

Handwritten musical score for the second system. It features a vocal line in the treble clef with the lyrics "c-r-e-s-c-e-n-d-o" written below. The piano accompaniment is in the bass clef. The music includes various note values and rests.

Handwritten musical score for the third system. It consists of two staves: a treble clef staff and a bass clef staff. The treble staff contains a melodic line with notes and rests. The bass staff contains a piano accompaniment with chords and notes.

Handwritten musical score for the fourth system. It features a vocal line in the treble clef with the lyrics "t-r-i-b" written below. The piano accompaniment is in the bass clef. The music includes various note values and rests.

Am

