

CA 613

POV 2 K1.2.5b

Browning Worn

Also Magic Eye

CARNEGIE BIBLIOTHEEK
Coates
Verzameling

U.S.

Handwritten musical notation on two staves. The top staff is in treble clef and the bottom in bass clef. It features various chords and notes, including a 7th chord with a flat and a sharp.

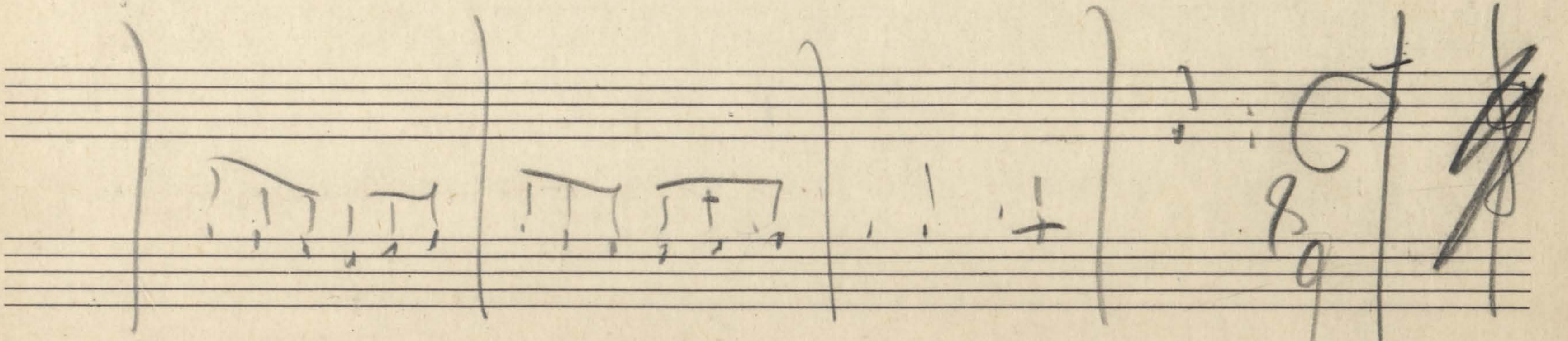
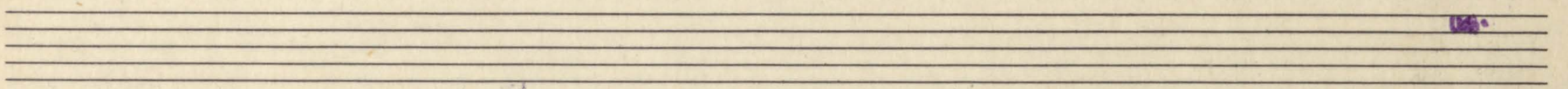
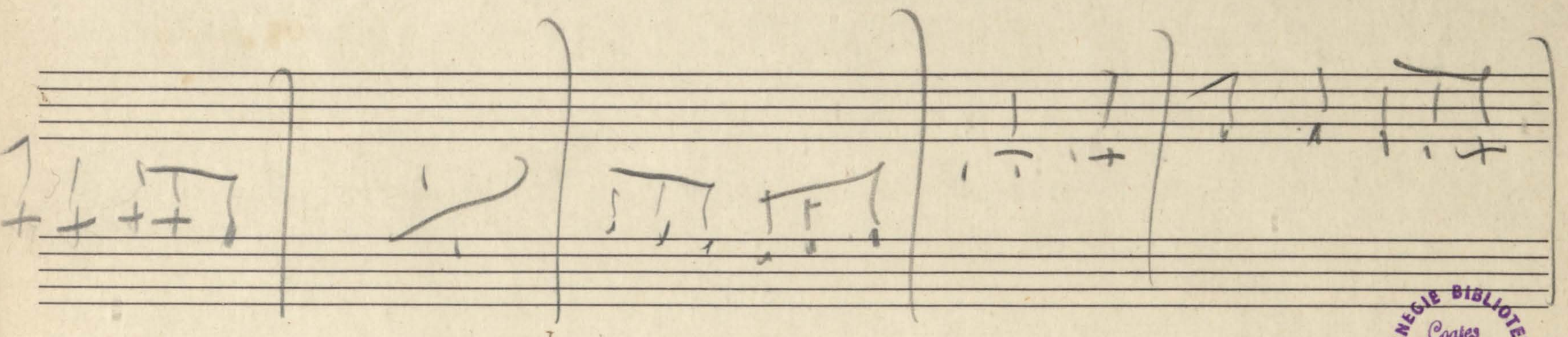
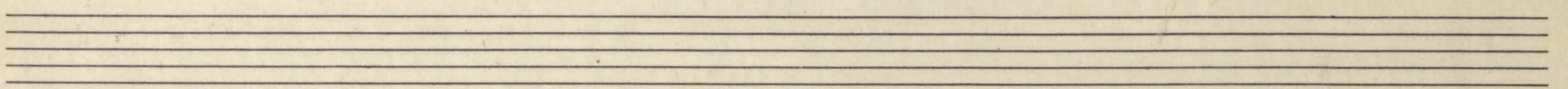
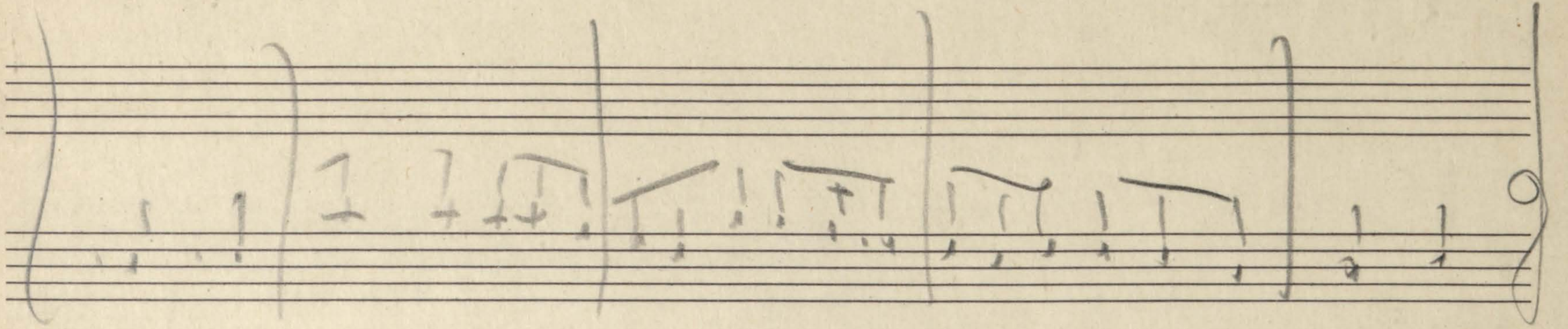
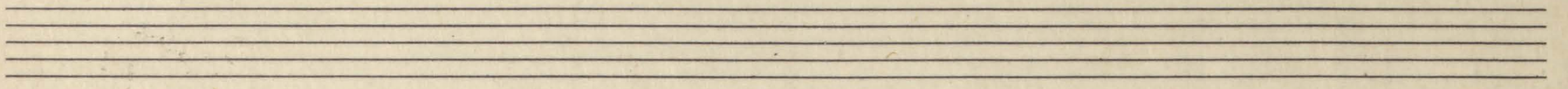
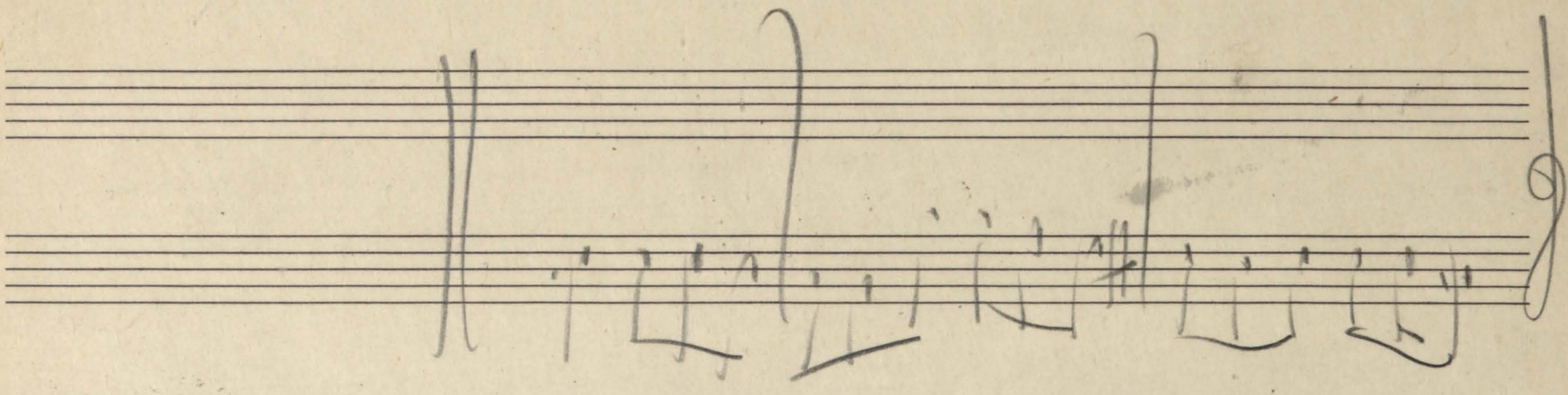
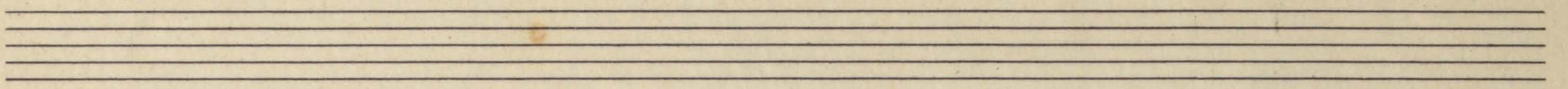
Handwritten musical notation on two staves, marked with a large bracket on the left. The top staff has a treble clef and the bottom a bass clef. It includes a "dolce" marking and a key signature change to G major.

Handwritten musical notation on two staves, marked with a large bracket on the left. The top staff has a treble clef and the bottom a bass clef. It features complex rhythmic patterns, including triplets and sixteenth notes.

3
4

etc
loos
down

A + B consecutively



CARNEGIE BIBLIOTHEK
Coates
Versammlung

Handwritten musical score for piano and voice. The score consists of two systems of staves. The first system has a vocal line on the top staff with lyrics "LIT" and a piano accompaniment on the bottom two staves. The second system continues the piano accompaniment. The handwriting is in ink on aged paper.

Contemplation on the light shining thro' the Rose Window
in a cathedral -

Handwritten musical notation on two staves. The top staff begins with a treble clef and a key signature of one flat (Bb). The bottom staff begins with a bass clef and a key signature of one flat (Bb). The notation includes various note values and rests.

Handwritten musical notation on two staves. The top staff continues with a treble clef and a key signature of one flat. The bottom staff continues with a bass clef and a key signature of one flat. The notation includes various note values and rests.

Handwritten musical notation on two staves. The top staff begins with a treble clef and a key signature of one flat. The bottom staff begins with a bass clef and a key signature of one flat. The notation includes various note values and rests.

Handwritten musical notation on two staves. The top staff begins with a treble clef and a key signature of one flat. The bottom staff begins with a bass clef and a key signature of one flat. The notation includes various note values and rests.

6.20

3.50

~~8.45~~

9

10

11

12

1

2

3.20

Handwritten musical notation on a three-staff system. The top staff is in treble clef with a 4/4 time signature. It contains a whole note chord with a brace above it labeled '8-7', followed by a half note chord, and then a melodic line with eighth notes and a dotted half note. The middle staff is in bass clef and contains three chords. The bottom staff is in bass clef and contains two chords. Vertical bar lines separate the measures.

Eleven sets of empty musical staves, each consisting of five horizontal lines, arranged vertically down the page.