

Handwritten musical score for voice and piano. The score consists of several staves. The top staff is for the voice, with lyrics: "p Menu Moss", "rall", "Tempo", "see below", and "to Currel". The piano accompaniment is written on multiple staves below. The music includes various notes, rests, and dynamic markings. There are some corrections and annotations throughout the score, including a circled 'A' and a star in a circle.

A circled star symbol is followed by a musical staff containing handwritten notes and rests. Below this staff are several empty musical staves.



Tempo de Valse  
(Slowish)

# Alfred's Happy Mother

POV2 K1-3-7a

24

A handwritten musical score on aged, yellowed paper. The score is written in ink and consists of ten systems of two staves each. The notation includes various musical symbols such as notes, rests, beams, and dynamic markings like 'p' and 'f'. There are several instances of crossed-out or heavily scribbled-out sections, particularly in the lower half of the page. The handwriting is somewhat messy and appears to be a working draft. The paper shows signs of wear, including creases and discoloration.





Alfie's Happy Mother

PDW2 11.3.74

25



Marche Humoresque 1942 The Epilogue to Little Alfie

Handwritten musical score for piano, consisting of 12 staves. The notation includes treble and bass clefs, a key signature of one sharp (F#), and a 4/4 time signature. The score is marked with dynamics such as *mf*, *pp*, and *dem*, and includes performance instructions like "Tempo de Marcia". There are several annotations in the left margin, including "3<sup>rd</sup> lower" and "8v". The music features complex rhythmic patterns, including triplets and sixteenth-note runs, and various chordal textures. The piece concludes with a final cadence and a fermata.



No. 103 Carl Fischer, Inc., New York.

CARNEGIE BIBLIOTHES  
Coates  
Detmolding

PD12 K1-3-7a U.S.

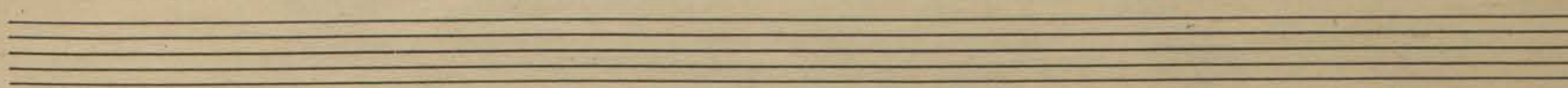
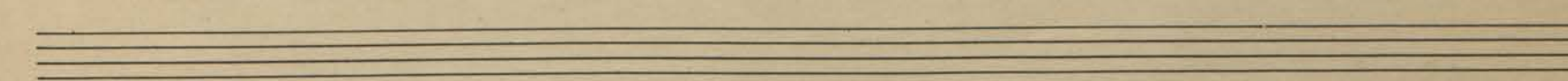
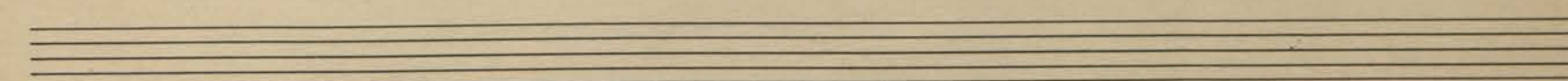
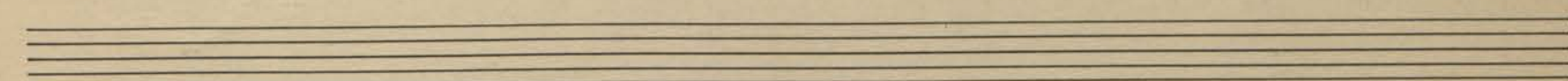
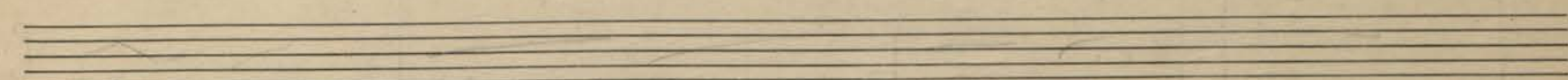
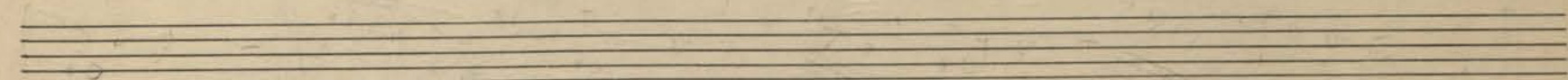
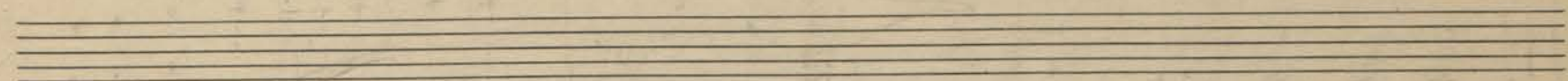


Handwritten musical score for piano, consisting of approximately 12 staves. The notation includes treble and bass clefs, various note values (quarter, eighth, sixteenth notes), rests, and complex chordal structures. Dynamic markings such as *p*, *mp*, *ff*, *dim*, and *ppp* are present throughout. Performance instructions include *eres*, *rall*, and *2 Volta*. The score concludes with a double bar line and a sharp sign.

day of U.S.A. 2<sup>nd</sup> print  
Wonderful news!

8<sup>th</sup> Nov 1942  
Holly wood.





*Handwritten scribbles and text on the left margin.*

